

Hatfield Haven Dementia Care Home



Specialists In
Dementia Care

People Say The Nicest Things

These are just some of the many kind words we receive from our residents' family members.

"I would like to say a huge thank you to the manager and her team at Hatfield Haven for the wonderful care given to my mum. For me it was wonderful that mum was able to stay at the home to the very end and her quality of care in those final days was truly amazing. All the carers at Hatfield Haven are wonderful people."

"I will always have fond memories of the time mum spent there as I know she was happy and enjoyed many a lovely outing in the sunshine. A trip to Woburn Safari Park and the seaside put a smile on mums face for long time."

"Everyone and I mean everyone are so caring in all departments, everyone always greets you with a smile. The atmosphere is just excellent. It's a place where I would wish to be in my later years. Thank you all, you are stars."



Hatfield Haven

dementia care home is located in the quiet and picturesque village of Hatfield Heath on the borders of Essex and Hertfordshire, just 5 miles south east of Bishops Stortford and close to the M11.

The home provides a cosy, comfortable and friendly environment for 25 residents, all of whom have an ensuite WC in their well-furnished single rooms and double rooms. Rooms in the new extension also have ensuite.

There are two lounges, a sun lounge, a dining room and also a hairdressing salon.

Family members are always welcome and where possible we include them in their loved ones' daily lives and well-being.

Having purchased Hatfield Haven in 2007, the home's owners have invested many thousands of pounds to improve the furnishings and facilities, including a specially adapted minibus.

At Hatfield Haven all residents can live an active life, either in the home, the secluded rear garden, a walk to the local shops, or on days out using our minibus





Activities

at Hatfield Haven are not confined to the care home itself, and our residents enjoy plenty of fresh air with our many trips away from the home.

Our own adapted minibus gives us so much more flexibility with the choice of location, and also the frequency of escorted days out that have included;

- The London Eye and a cruise along the River Thames
- The London Natural History Museum
- Woburn Safari Park
- A seaside trip to Walton on The Naze
- Southend Sea Life Centre
- Paradise Wildlife Park.
- Local garden centres



Back at home, but still outside, when the weather is milder it's out into the garden for a bit of gardening, and when it's warmer, just enjoying both the sunshine, maybe a barbecue, and an ice cream or two!



Entertainment

in the home also includes a wide variety of acts and activities.

As well as singers performing the favourite songs of yesteryear (to which our carers and residents seem eager to get up and dance.)

We are also pleased to invite local musical, theatrical and amateur dramatic groups into the home to entertain, and interact with our residents. We have a great relationship with the local school who visit us often and enjoy themed days. We also like to visit them.

Everyday, we encourage our residents to get involved in many activities including flower arranging, hand-made greetings cards and making homemade jam from strawberries we had picked ourselves.

Exercise is also very much on the schedule including a daily morning "move it or lose it" class.

And with birthdays so important, we make sure our parties are very special, and we also celebrate our national holidays.

Yes, the daily life of a resident at Hatfield Haven is full, varied and entertaining.





Nutrition

is extremely important as dementia can greatly affect a person's attitude to food, and can impact upon their eating habits.

We ensure each resident has a healthy and balanced diet, as well as making meal times as enjoyable as possible.

We can cater for all dietary requirements, for example; low fat, diabetic, low sodium, gluten free, vegetarian and for all illnesses requiring specialist diets.

Breakfasts consists of a full cooked breakfast, cereals, porridge, toast as well as Fruit juices, tea and coffee.

The lunchtime meal offers a choice of main meals. Suppers are a warm meal, and there is an evening snack with a choice of a hot drink.

A carefully developed menu offers variety throughout each week, and all food is freshly prepared by our chef.

Our residents can also choose where they eat; in our dining room, the lounge, or in their own room.



Top Quality Care

is something to which we at Hatfield Haven aspire, and the CQC, has confirmed this with a GOOD rating.

In their latest inspection the CQC report included *“people who used the service were all very positive about the care provided.”*

They made comments such as,

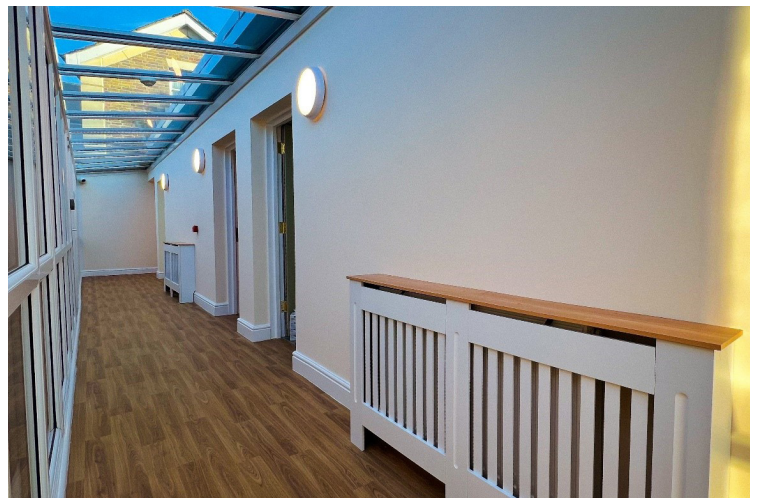
“I am so pleased with all of the staff they are excellent” and

“They are very good, they will do anything for you.”

One relative said “When I wanted to look around the home I was told I could come any time which was refreshing

Hatfield Haven is a wonderful care home, in a beautiful location, where everything is done to make the most of the residents’ day to day life.

Why not pay us a visit and see for yourself how caring, friendly, we are?



Hatfield Heath's own Village Tearoom



Hatfield Haven
Dementia Care Home

Stortford Road
Hatfield Heath
nr Bishops Stortford
CM22 7DL

Tel: 01279 730 043

info@hatfieldhaven-dementiacarehome.co.uk

www.hatfieldhaven-dementiacarehome.co.uk

Part of Haven Care Home Management Group

Specialists In
Dementia Care

